



Zone Control Panels

The Original “Boiler Room in a Box” COM



Danfoss COM (commercial zoning panel) panels provide a package solution for controlling larger number of zones effectively in large residential or light commercial projects.

Application

Capable of delivery up to 400 MBH based on a 25°F, Delta T, the COM panel was designed specifically for large residential or light commercial applications. The COM Panel can be the heart of a large modular heating system. It is used in applications requiring from 6 to 16 zones of mixed water.

Function

As a stand alone panel the COM multi zone unit provides up to 16 zones of mixed water, each having a capacity of up to 3.5 GPM (3/4" zone valves are provided). Flow to each zone is controlled by a slow acting zone valve which eliminates the water hammer effect commonly experienced with quick acting valves.

The COM is not supplied standard with thermostats but can be supplied with any of the fine Danfoss Thermostats (RET, RETB, RH, 7000 and 8000 series) or customer supplied thermostats can

usually be used (non power-robbing). Thermostats are field wired to the COM terminal strip which is factory wired into switching relay(s) which are standard on the COM. A pressure bypass valve provides a minimum flow through the panel when there is a limited demand for heat. Mixed water is provided by a 3-way valve which is controlled by a Danfoss ECL 302 outdoor reset control.

Options

The COM zone unit can be supplied with from 6 to 16 zone valves. Each zone valve is capable of up to 3.5 GPM with the combined total for output flow not to exceed 35 GPM.

Construction

All COM zone control panels are contained in a lockable, wall mounted powder steel enclosure. Each component has been selected to provide efficient and reliable operation. Every COM panel is

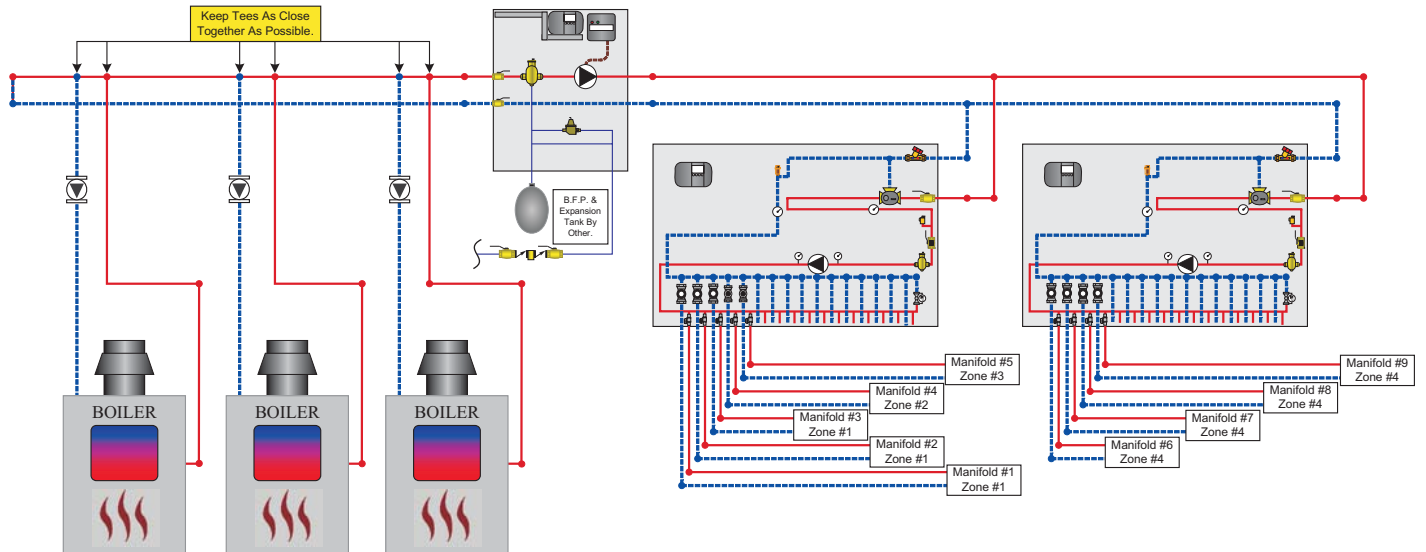
factory leak tested prior to leaving the factory. All electrical and mechanical components are thoroughly inspected and function tested.

FEATURES AND BENEFITS

- Pre engineered
All ZCP panels are designed in accordance with accepted engineering practices and hydronic principles to provide efficient and reliable operation
- Pre assembled and tested
Factory assembled using specialized equipment and testing methods. Reduces field labor and service calls
- Pre-wired
All controls are factory wired and tested, eliminating a time consuming part of the installation
- Approvals
Each panel is ETL listed and complies with the requirements of CAN/CSA-22.2 No.14 & UL508

COM

Application Example

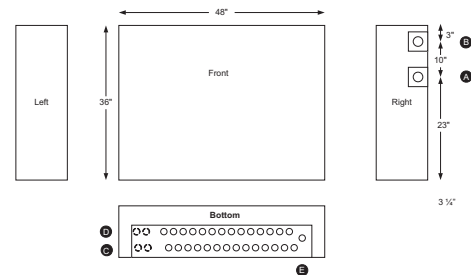


Standard Equipment

Circulator, Air Eliminator, Balancing Valve, 115 Power Plug, System Controller, Required Sensors, Temperature Gauge, 3 way valve, Motorized Actuator, Zone Valves (as required), pressure bypass valve, Dahl isolation and balance valves, thermostats supplied separately

Manufacturing Specifications	
Listing	cETLus # 3094259
Conforms to	Standard CAN/CSA C22.2, UL 508
Pressure rating	125psi @ 212°F
Dimensions	
Dimensions	36"H x 48"W x 16"D
Output Range of Panel (based on 20°F ΔT between Supply & Return)**	140,000 to 400,000 BTU/Hour
Max. flow & head pressure	Refer to Operations manual concerning pump supplied.
Max. ambient temperature	120°F (49°C)
Max. supply temp. from heat source to panel	200°F (93°C)
Max. supply to system	180°F (82°C)
Settable fluid temp. range	50-180°F (10-82°C)
Power supply (pre-wired)	Module with 120V plug & 6' cord. Requires dedicated receptacle, 15 Amp, 120V, 60Hz Single phase
Auxiliary terminal	Dry contacts, 1x2 terminal strip, screw type, max. load 2A
Piping connections	1-1/2" Female pipe thread (FPT) , 3/4" Sweat connections
Acceptable fluid	100% water or up to a maximum of 50% mixture of water and glycol*
40 GPM Maximum flow	

ZCPCOM Dimensions



A	Heat source supply
B	Heat source return
C	System supply
D	System return
E	Expansion tank and Fill connection



ETL listed
complies with CAN/CSA-C22.2
No. 14 & UL-508

ZCP Mfg Inc.

8034, 11500-35th St. SE
Calgary AB T2Z 3W4
Tel: 403-236-9560

Fax: 403-236-0826
Email: lyndon@zcpinc.com
website: www.zcpinc.com

